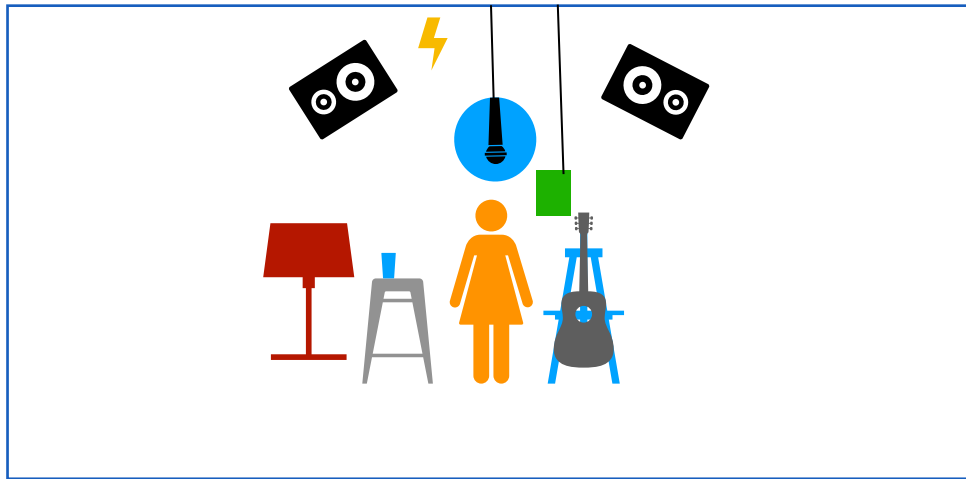


TRACY GRAMMER

2022 STAGE PLOT & TECHNICAL RIDER - SOLO / ONE GUITAR FLY-OUT

AUDIENCE



Artist supplies:

- Shure SM87A vocal microphone (+48v power)

House supplies:

- One (1) boom stand with mic clip
- One (1) passive DI
- Two (2) monitors angled as shown
- Two (2) XLR cables as shown
- One (1) guitar stand
- One (1) small wooden stool/table with a glass of water (no plastic bottles please)
- One (1) floor lamp for ambience/living room feel (indoor evening shows only)
- Tracy usually stands, but please have a non-padded, non-squeaky chair available just in case (no stools, please)
- Power supply at front of stage

Technical requirements:

- Reverb/delay
- Sweepable 4-band EQ
- 48v phantom power
- Monitor mix separate from house mix
- Professional sound person

Questions? Subtractions/substitutions? Good communication will help us avoid surprises on concert day and enable Tracy to put on the best performance possible. Please be in touch if for some reason you are unable to fulfill the requirements of this rider:

Tracy Grammer • 503-475-7473